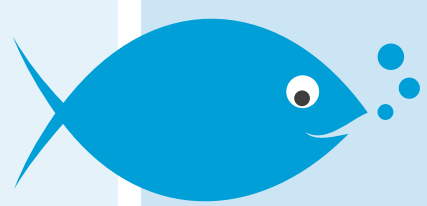


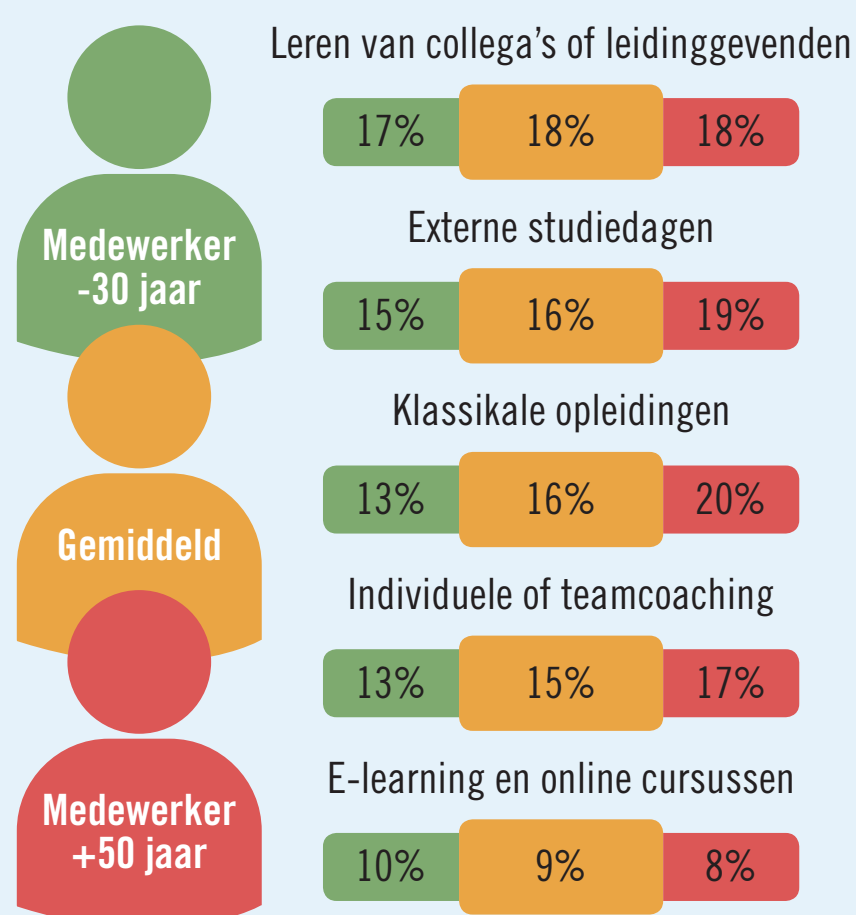
# CONTINUOUS HOLISTIC LEARNING



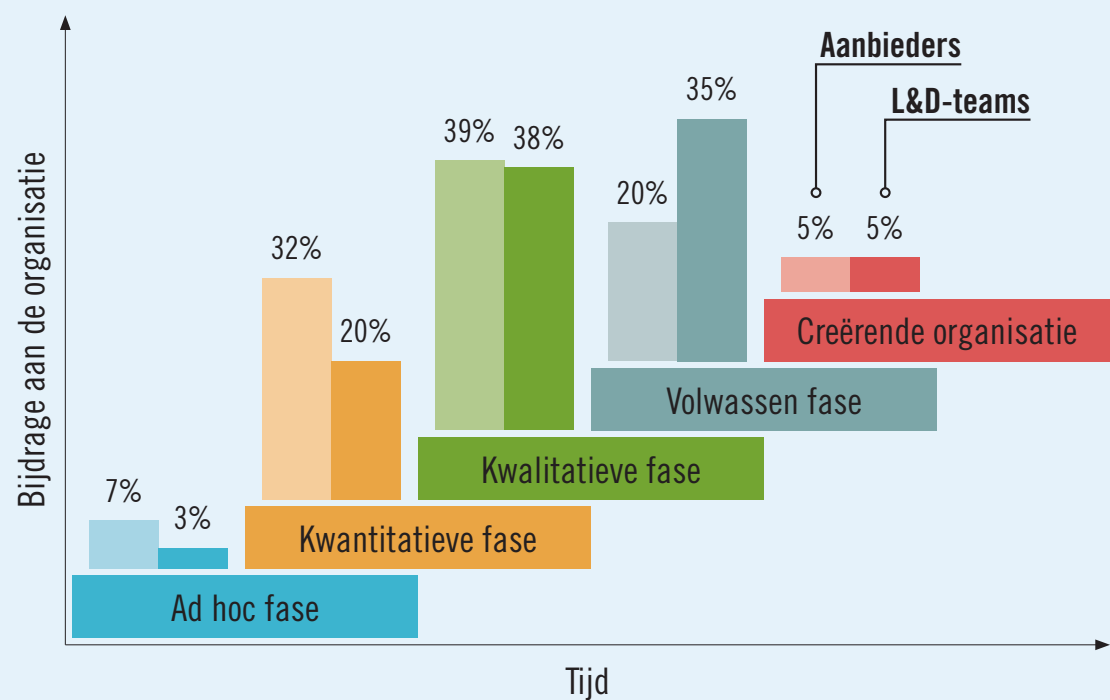
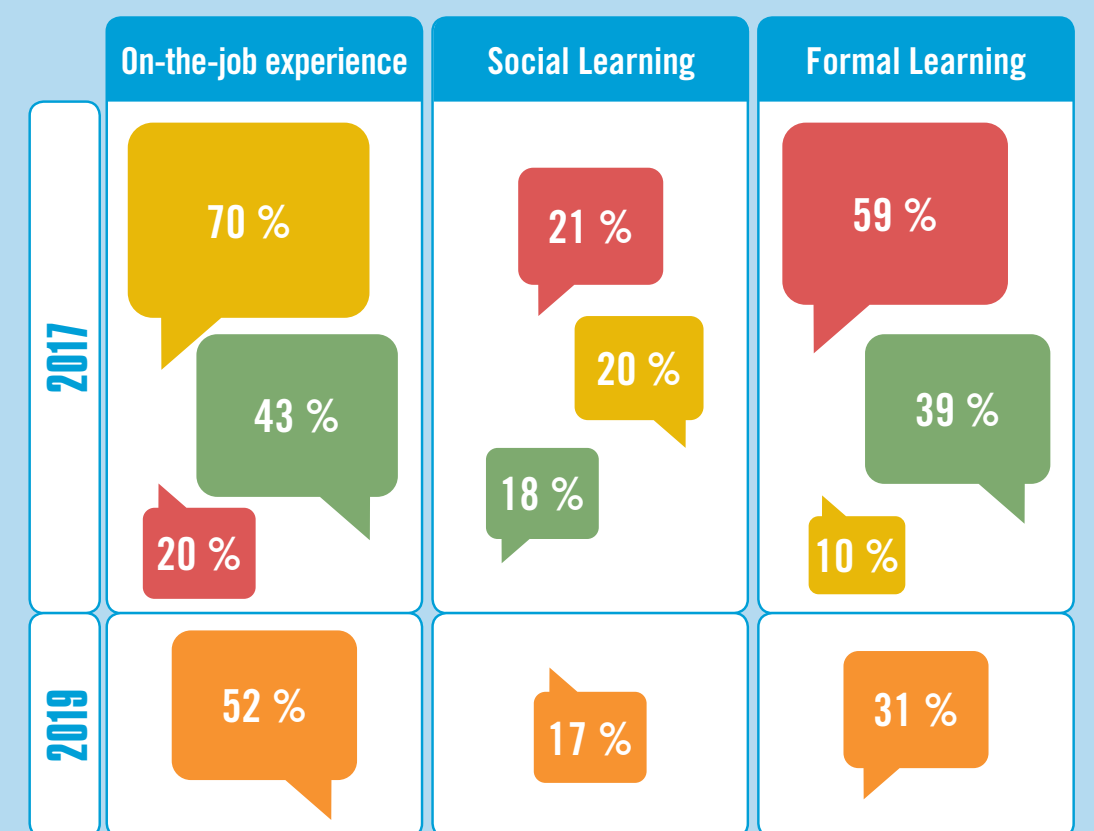
# LEADER AS A TEACHER

# EXPERIENTIAL LEARNING

## Top 5 leervormen



Time spent: 70:20:10 / workers / L&D / managers



**INITIATIEFNEMER L&D**

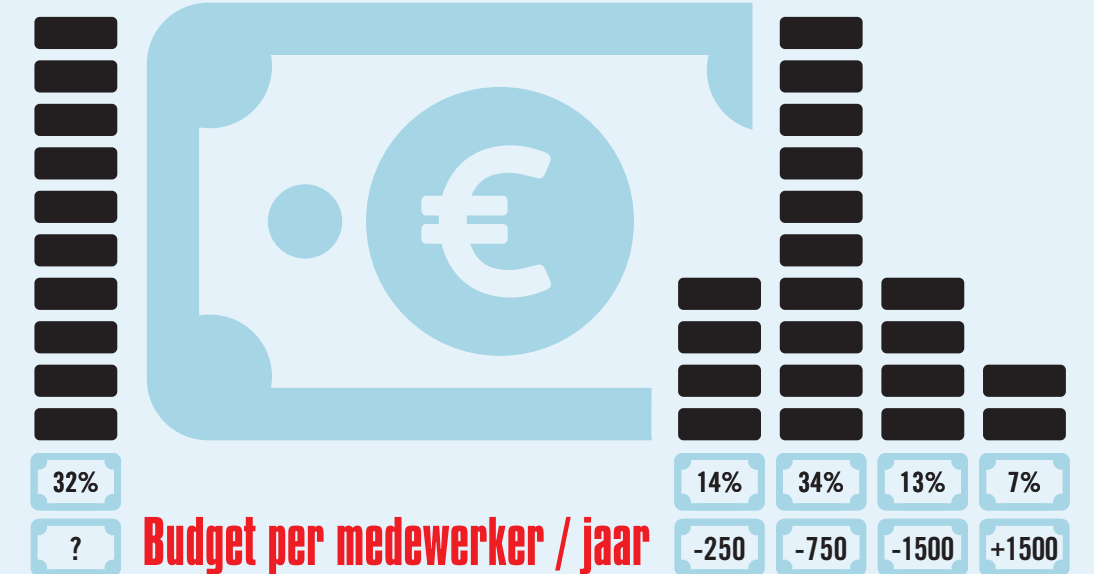
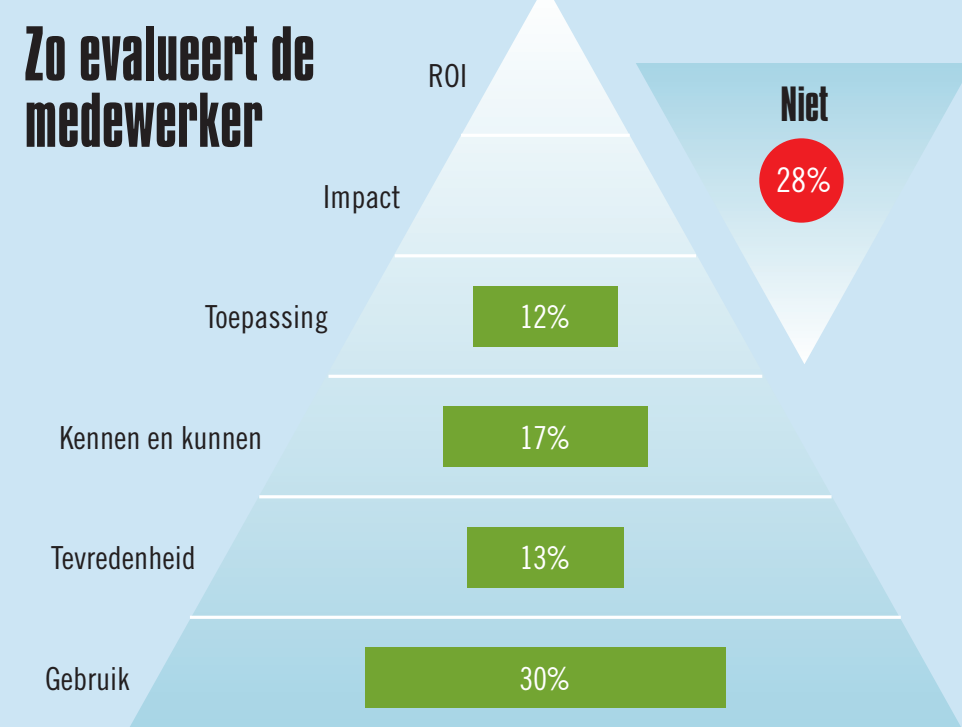
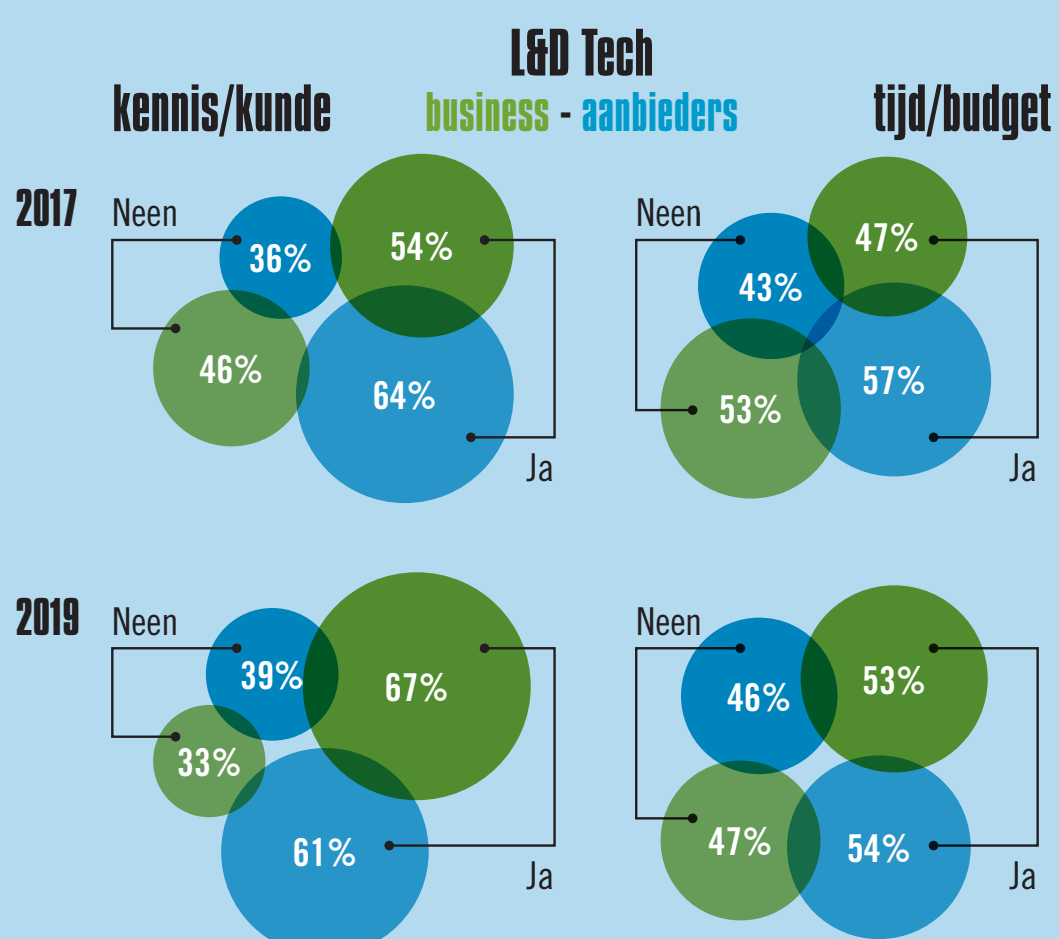
%	Werknemers	Werkgevers	L&D-teams	Aanbieders
Individu	35	26	31	18
HR/L&D	13	18	24	27
Leidinggevende	28	25	26	26
Management	8	18	17	21
Collega's/team	16	13	4	9

# DE INDIVIDUELE MEDEWERKER LEERT

## LEARNING & TECHNOLOGY

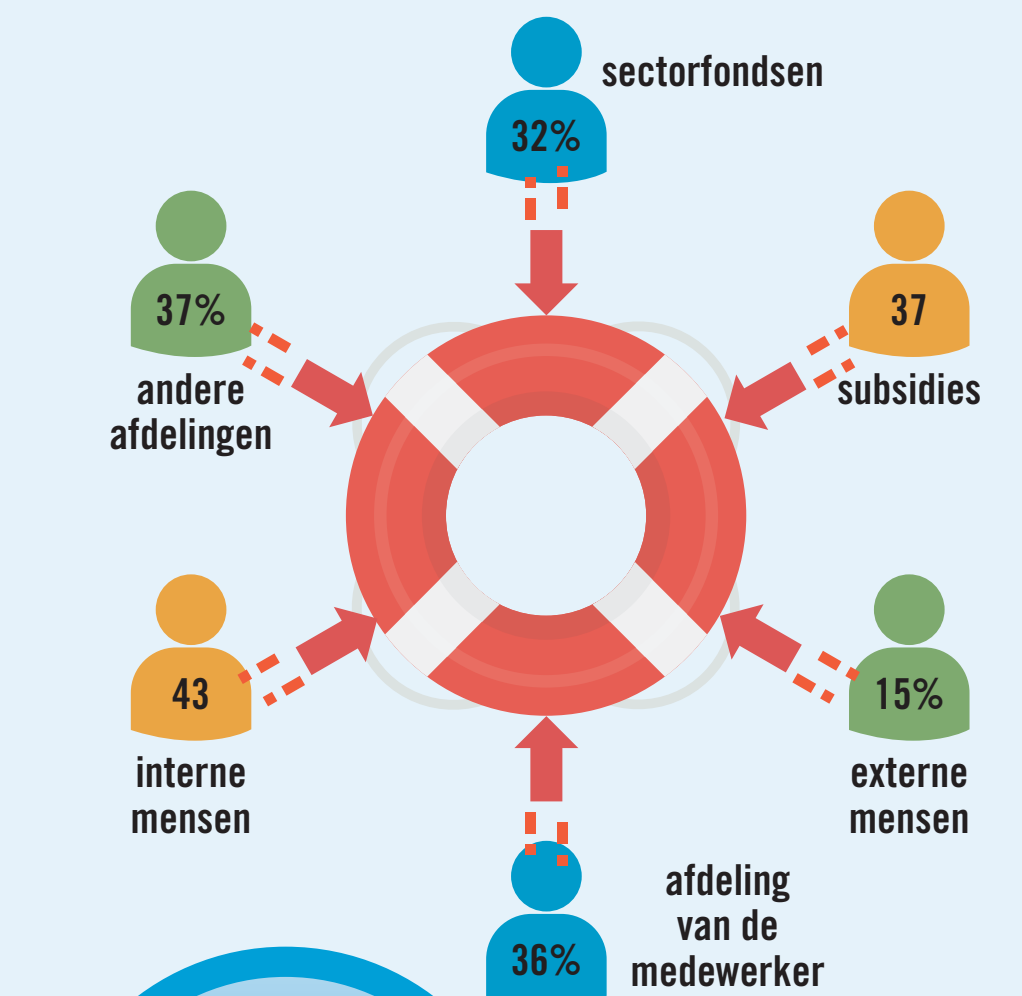
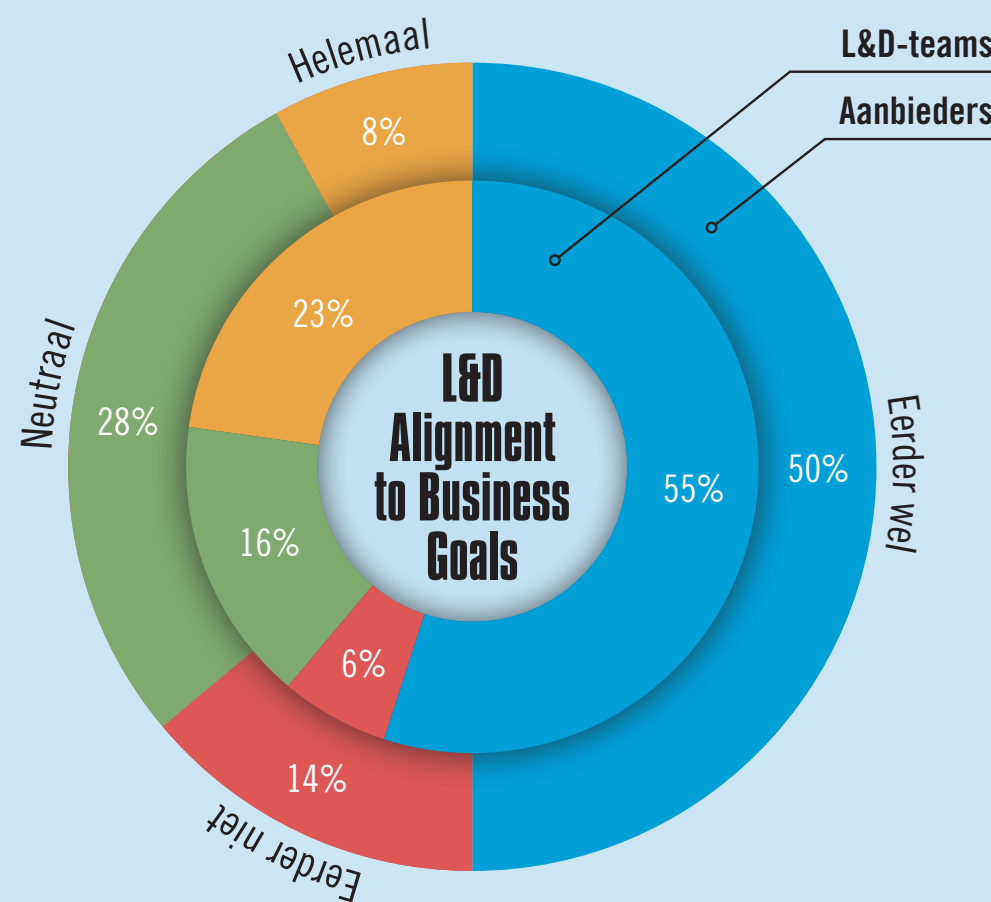
## BUSINESS FOCUSED MEASURES

## BUDGET & RESOURCES



WAAROM L&D SOFTWARE?

	business	vs	aanbieders
Opvolging & analyse	74	>	61
Efficiëntie	65	<	74
Groter bereik	47	~	45
Tijds winst	41	<	48
Hoger engagement	18	<	30
Hogere productiviteit	17	<	35
Kostenreductie	17	<	31



FISHBOWL  
02/10/19  
SECUREX  
BRUSSEL